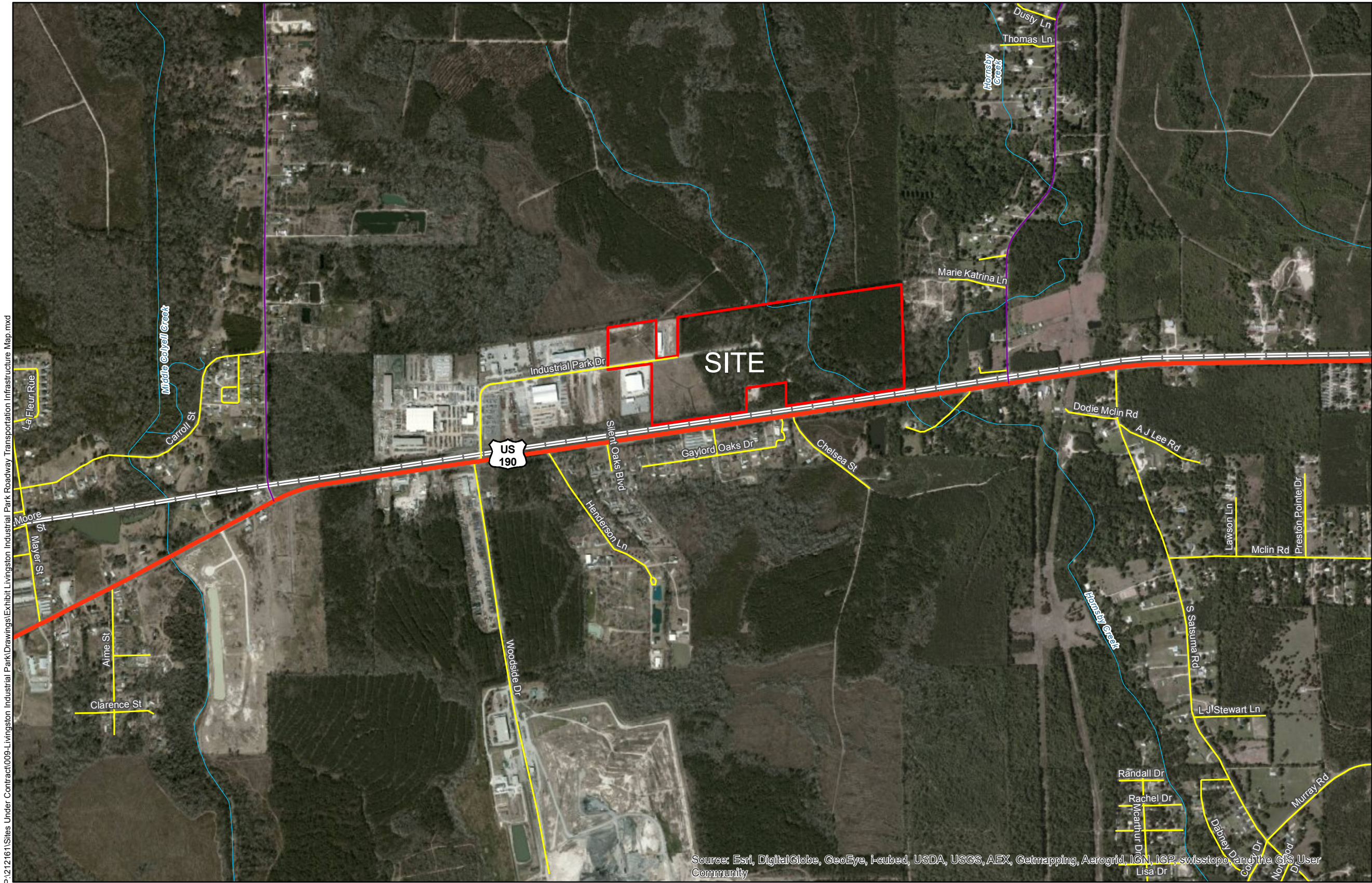


# Exhibit T. Livingston Industrial Park Roadway Transportation Infrastructure Map

P:\212161\Sites Under Contract\009-Livingston Industrial Park\Drawings\Exhibit Livingston Industrial Park Roadway Transportation Infrastructure Map.mxd



- General Notes:
1. No attempt has been made by CSRS, Inc. to verify title, actual legal ownership, deed restrictions, servitudes, easements, or other burdens on the property, other than that furnished by the client or his representative.
  2. Roads and port data obtained from Louisiana GIS Digital Map May 2007 Compilation DVD set.
  3. Railroad data obtained from 2013 TIGER datasets via U.S. Census Bureau at <ftp://ftp2.census.gov/geo/tiger/TIGER2013>.




Project:  
**Site Exhibit for  
Livingston Industrial Park  
Livingston Parish, LA**

Client:

**BRAC**



- Legend:
- Site Boundary
  - US Highway
  - Rural State Highway
  - Local Road
  - Railroad
  - Waterway

 **Baton Rouge Area Chamber.**  
Source:  
GIS features acquired from public domain  
state and federal data sources (LDOTD,  
GNIS, LOSCO, US Census Bureau).

Date:	12/6/2013
Project Number:	212161.20.009
Drawn By:	MMS
Checked By:	TMG

**CSRS**  
IMAGINE SHAPE DELIVER  
6767 Perkins Road Suite 200 Baton Rouge, LA 70808  
Telephone: 225 769-0546 Fax: 225 767-0060  
[www.csrsonline.com](http://www.csrsonline.com)