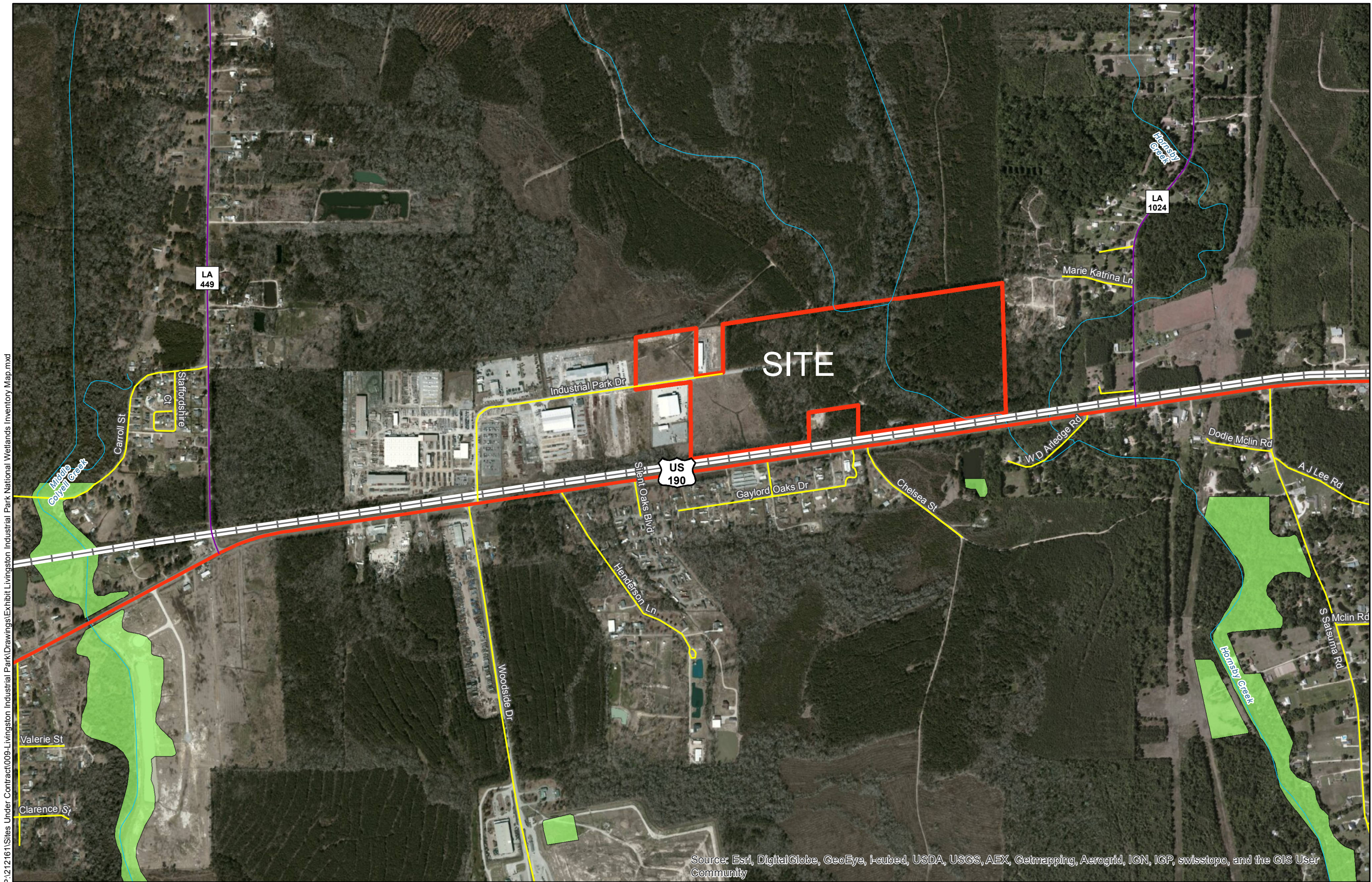


Exhibit Z. Livingston Industrial Park National Wetlands Inventory Map



P:\212161\Sites Under Contract\009-Livingston Industrial Park\Drawings\Exhibit Livingston Industrial Park National Wetlands Inventory Map.mxd

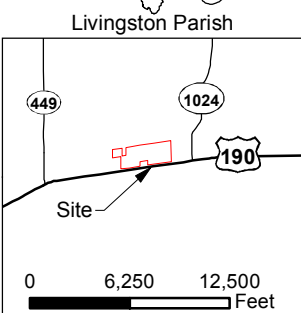
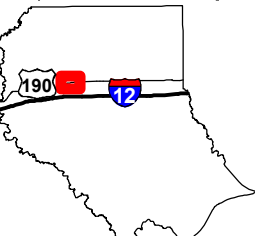
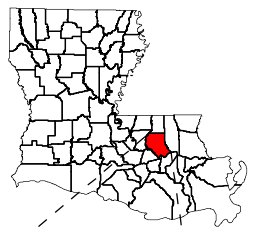
- General Notes:
1. No attempt has been made by CSRS, Inc. to verify title, actual legal ownership, deed restrictions, servitudes, easements, or other burdens on the property, other than that furnished by the client or his representative.
 2. Railroad and Highway data obtained from 2013 TIGER datasets via U.S. Census Bureau at <ftp://ftp2.census.gov/geo/tiger/TIGER2013>.
 3. Roads data taken from The Louisiana GIS Digital Map May 2007 Compilation DVD Set, published by Louisiana State University under contract to the Louisiana Oil Spill Coordinator's Office.
 4. National Wetlands Inventory data downloaded from http://www.fws.gov/wetlands/Downloads/State/LA_wetlands.zip.

Source: Esri, DigitalGlobe, GeoEye, i-cubed, USDA, USGS, AEX, Getmapping, Aerogrid, IGN, IGP, swisstopo, and the GIS User Community

Project:
**Site Exhibit for
Livingston Industrial Park
Livingston Parish, LA**

Client:

BRAC



- Legend:**
- Site Boundary
 - US Highway
 - Rural State Highway
 - Local Road
 - Railroad
 - Waterway
 - NWI Wetlands



Source:
GIS features acquired from public domain
state and federal data sources (LDOTD,
GNIS, LOSCO, US Census Bureau).

Date:	12/5/2013
Project Number:	212161.009
Drawn By:	MMS
Checked By:	TMG

CSRS
IMAGINE SHAPE DELIVER
6767 Perkins Road Suite 200 Baton Rouge, LA 70808
Telephone: 225 769-0546 Fax: 225 767-0060
www.csrsonline.com