

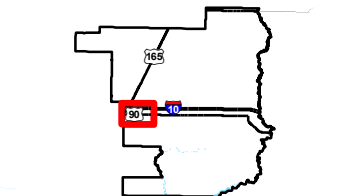
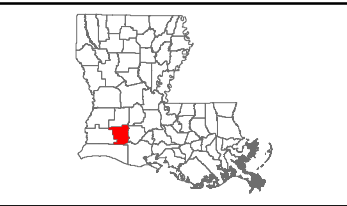
Exhibit P. T.O. Allen Industrial Park North Roadway Transportation Infrastructure Map



T.O. Allen Industrial Park North Roadway Transportation Infrastructure Map

Local Transportation Infrastructure
Allen Estates North Site
Jefferson Davis Parish, LA

One Acadiana



Jefferson Davis Parish

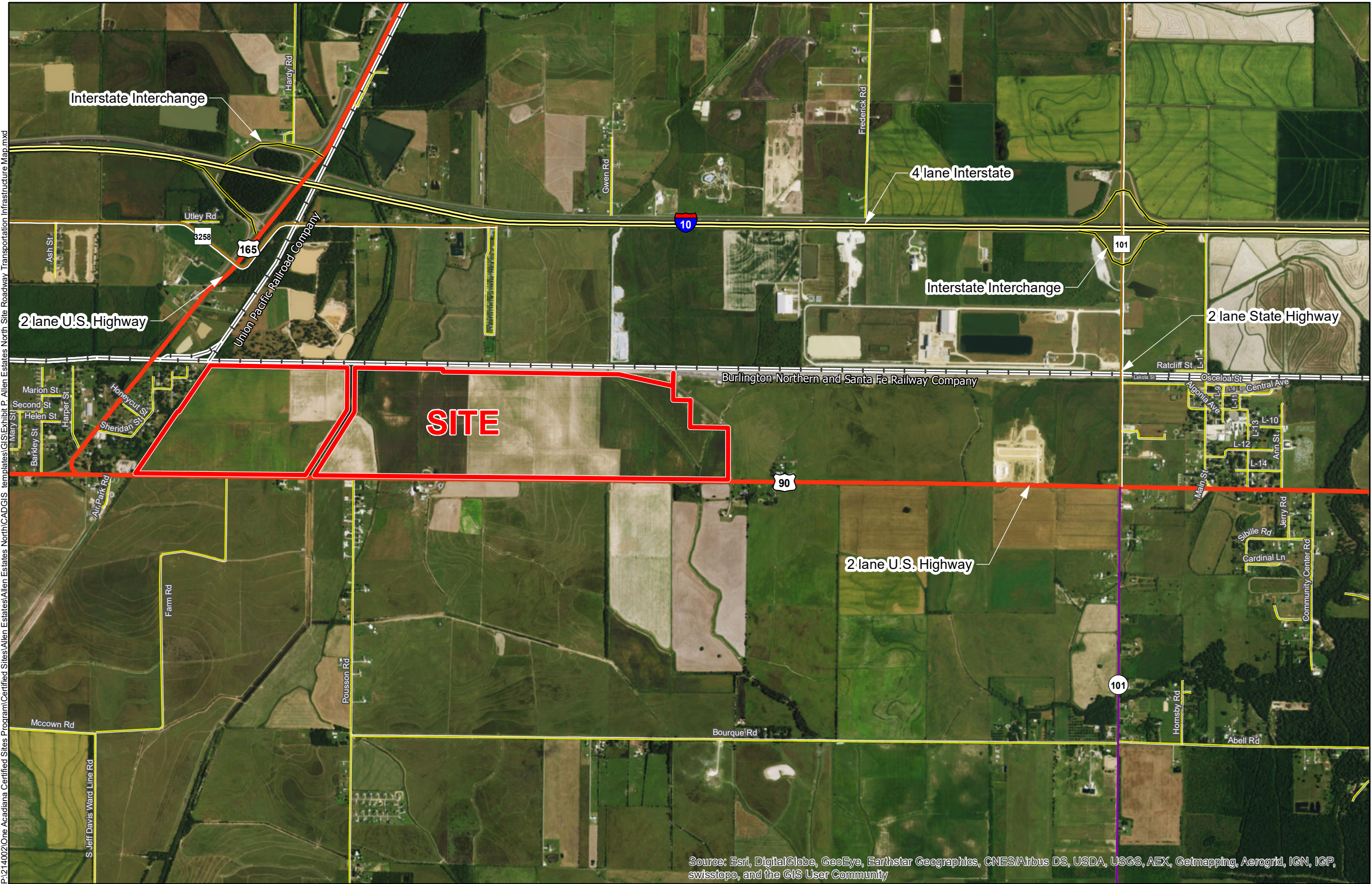
LEGEND

Site Boundary (561.51 Ac. ±)

Existing Roadway

- Interstate
- US Highway
- Urban State Highway
- Rural State Highway
- Local Roads
- Interchange
- Railroad

P:\214002\One Acadiana Certified Sites Program\Certified Sites\Allen Estates North\CAD\GIS templates\GIS\Exhibit P-Allen Estates North Site Roadway Transportation Infrastructure Map.mxd



Source: Esri, DigitalGlobe, GeoEye, Earthstar Geographics, CNES/Airbus DS, USDA, USGS, AEX, Getmapping, Aerogrid, IGN, IGP, swisstopo, and the GIS User Community

General Notes:

- No attempt has been made by CSRS, Inc. to verify site boundary, title, actual legal ownership, deed restrictions, servitudes, easements, or other burdens on the property, other than that furnished by the client or his representative.
- Transportation data from 2013 TIGER datasets via U.S. Census Bureau at <ftp://ftp2.census.gov/geo/tiger/TIGER2013>.



Scale 1:25,000
0 1,300 2,600 Feet



Date: 1/16/2017
Project Number: 214002
Drawn By: TMK
Checked By: JAY



6767 Perkins Road Suite 200 Baton Rouge, LA 70808
Telephone: 225 769-0546 Fax: 225 767-0060
www.csrsonline.com