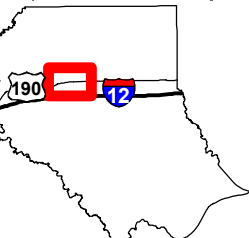
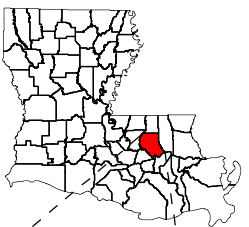


Exhibit P. Livingston Industrial Park Electrical Transmission Infrastructure Map

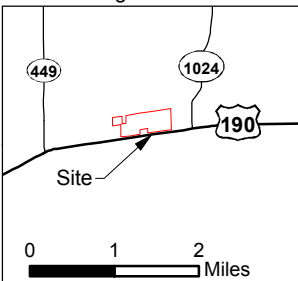
Project:
Livingston Industrial Park
Livingston Parish, LA

Client:

BRAC



Livingston Parish



Legend:

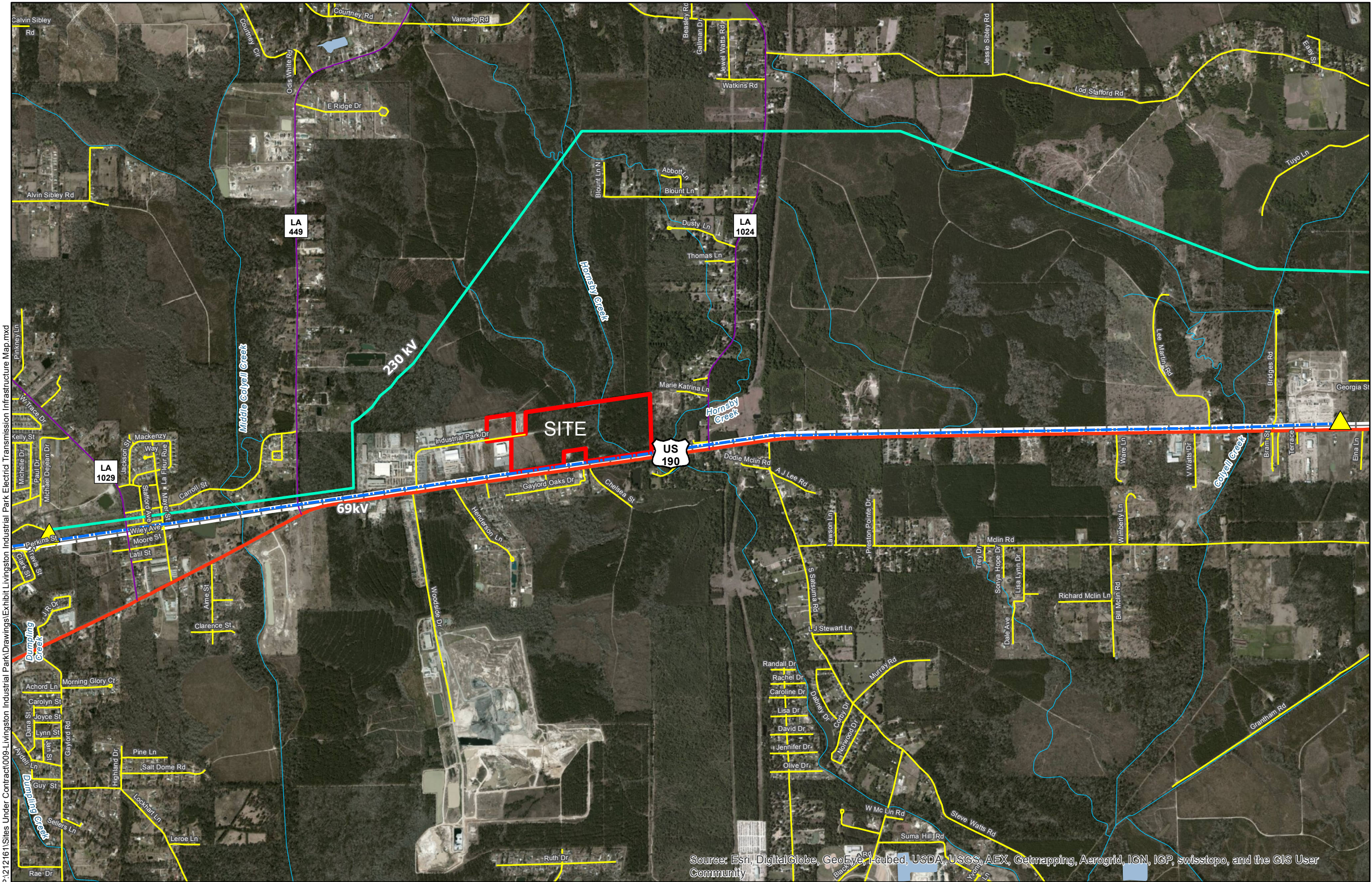
- Site Boundary
- Substation
- 69kV Transmission Line
- 230kV Transmission Line
- US Highway
- Rural State Highway
- Local Road
- Railroad
- Waterway



Source:
GIS features acquired from public domain
state and federal data sources (LDOTD,
GNIS, LOSCO, US Census Bureau).

Date:	12/4/2013
Project Number:	212161.20.009
Drawn By:	MMS
Checked By:	TMG

CSRS
IMAGINE SHAPE DELIVER
6767 Perkins Road Suite 200 Baton Rouge, LA 70808
Telephone: 225 769-0546 Fax: 225 767-0060
www.csrsonline.com



General Notes:

- No attempt has been made by CSRS, Inc. to verify title, actual legal ownership, deed restrictions, servitudes, easements, or other burdens on the property, other than that furnished by the client or his representative.
- Railroad data obtained from 2013 TIGER datasets via U.S. Census Bureau at <ftp://ftp2.census.gov/geo/tiger/TIGER2013>.
- Roads data taken from The Louisiana GIS Digital Map May 2007 Compilation DVD Set, published by Louisiana State University under contract to the Louisiana Oil Spill Coordinator's Office.
- Utility information obtained from visual inspection, the individual utility operators, and Louisiana One Call.
- Exact field location has not been determined by survey. The lines shown are an approximate representation only and may have been offset for depiction purposes.



Scale 1:27,000
0 1,125 2,250 Feet