

Exhibit I. Livingston Industrial Park Property Boundary Aerial Survey

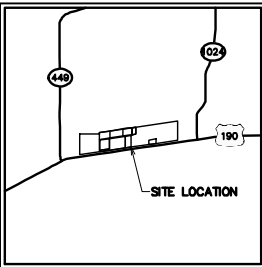
CSRS
IMAGINE SHAPE DELIVER
6767 Perkins Road Suite 200 Baton Rouge, LA 70808
Telephone: 225 769-0546 Fax: 225 767-0060
www.csronline.com

Project:

Map Showing
Site Exhibit of
Livingston Industrial Park

Client:

LEDG



VICINITY MAP
SCALE: NTS

Revisions:

#	Date	Description

Key Plan:



Sheet Title:

Livingston Industrial Park
Site Boundary w/ Aerial

Date: November 19, 2013

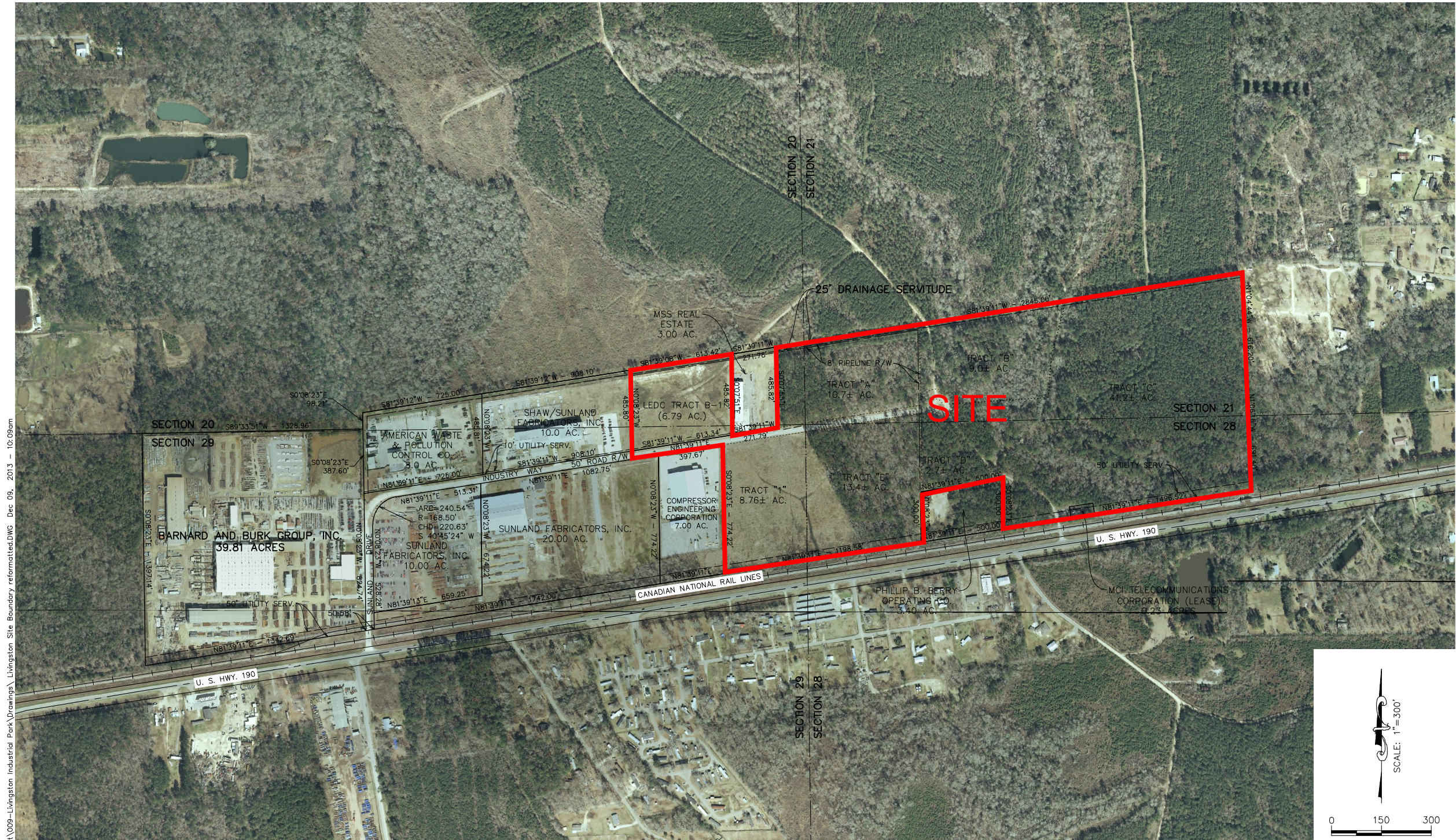
Project Number: 212161.20.009

Drawn By: JAY

Checked By: TMG

Sheet:

Sheet No: of



P:\212161\Site Under Contract\009-Livingston Industrial Park\Drawings\ Livingston Site Boundary reformatted.DWG Dec 08, 2013 10:09am

NOTES:

1. NO ATTEMPT HAS BEEN MADE BY CSRS, INC. TO VERIFY TITLE, ACTUAL LEGAL OWNERSHIPS, DEED RESTRICTIONS, SERVITUDES, EASEMENTS, OR OTHER BURDENS ON THE PROPERTY, OTHER THAN THAT FURNISHED BY THE CLIENT OR HIS REPRESENTATIVES.
2. REFERENCE DOCUMENTS:
 - 2.1. "LAYOUT MAP FOR LIVINGSTON PARISH INDUSTRIAL PARK SHOWING A CERTAIN TRACT OF LAND LOCATED IN SECTION 20, 21, 28, & 29, T 6 S - R 4 E, LIVINGSTON PARISH, LA BY ALVIN FARIBURN & ASSOCIATES, LLC DATED NOVEMBER 6, 2008.
3. SECTION LINES HAVE NOT BEEN FIELD VERIFIED AND ANY SHOWN ARE FOR GENERAL LOCATIVE INFORMATION ONLY.
4. THIS IS NOT A PROPERTY BOUNDARY SURVEY AND IS NOT INTENDED TO MEET THE LOUISIANA STANDARDS OF PRACTICE FOR PROPERTY BOUNDARY SURVEYS. BEARINGS AND DISTANCES OF PARCEL WERE OBTAINED FROM REFERENCE DOCUMENT "2.1".
5. THE COORDINATE SYSTEM USED IS NAD83 LOUISIANA STATE PLANE SOUTH (US FEET). COORDINATES WERE DERIVED BY OVERLAYING THE BOUNDARY ON AN AERIAL PHOTOGRAPH AND ARE WITHIN 100' OF TRUE LOCATION.
6. WETLANDS: A JURISDICTIONAL WETLAND DETERMINATION HAS BEEN COMPLETED FOR PARTS OF SITE ACCORDING TO CORPS OF ENGINEERS JURISDICTIONAL DETERMINATION #MVN-2010-0052601-5A DATED MAY 16, 2012.